



**Solutions  
for human  
progress**

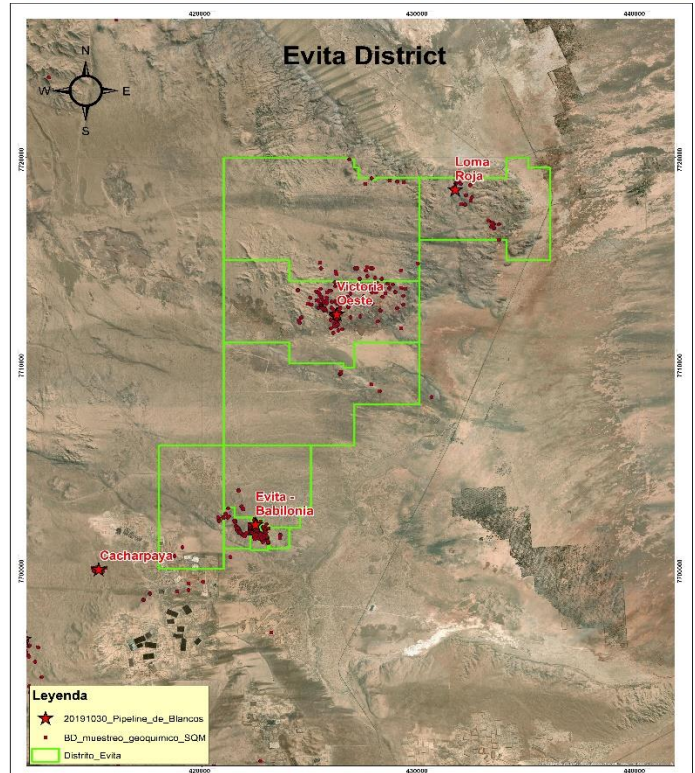
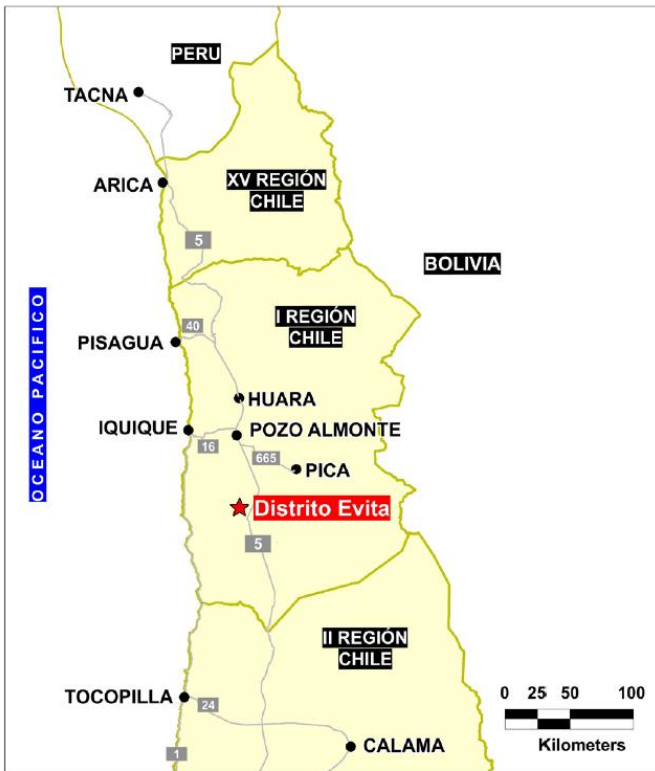
# Distrito Evita

Advanced Exploration

Prospect #12

## SUMMARY

Cu-Au bearing veins and stockwork systems, 3 projects with similar structural characteristics have been recognized, under nitrate cover and associated with strongly leached zones hematite/goetite. Confirmed for three projects: Au mineralized fault veins up to 8 g/tAu - open in all directions (Victoria Oeste-Loma Roja) and up to 30g/tAu (Evita-Babilonia).



## HIGHLIGHTS

Central Northing (UTM):	7705000
Central Easting (UTM):	420000
Elevation (masl):	1000
Metal(s):	Cu-Au
Deposit Style:	Veins (IOCG?)
Exploration Stage	Advanced-Basic Exploration
Area (hectares)	15691
Nearest Project:	New potential district
Historical:	60 salt crust drillholes



Geological Mapping:	1:5000
Geochemical Samples:	132
Trenching	N/A
Channel Samples	N/A
Geophysics:	Ground Mag
RC Drill holes	12 (1308m)
DDH Drill holes:	N/A
Total drilling :	12 (1308m)
Other:	Drillholes and geological work program (2020)

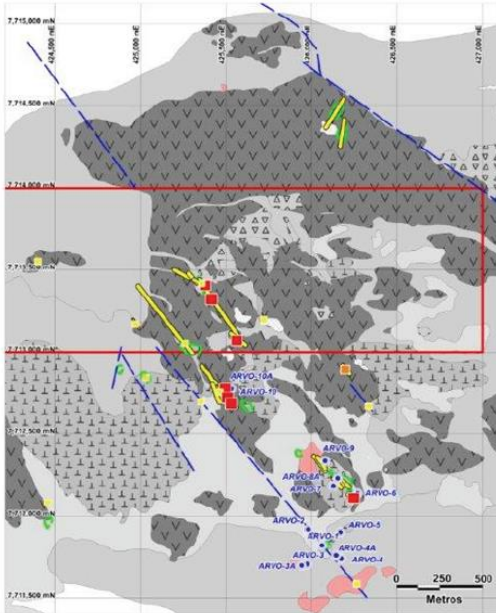




Solutions  
for human  
progress

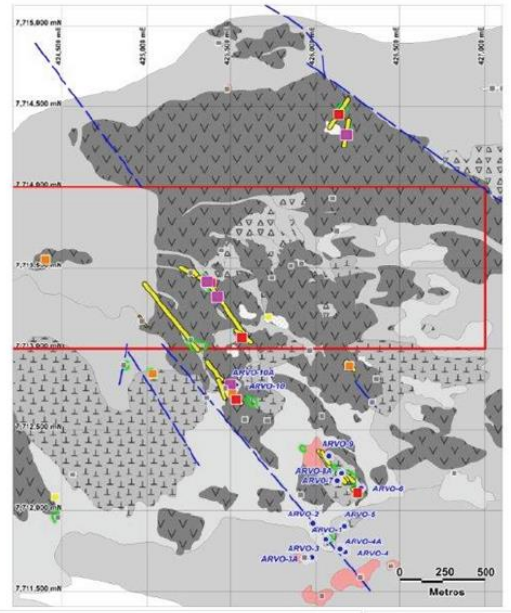
# Distrito Evita

Advanced Exploration  
Prospect #12

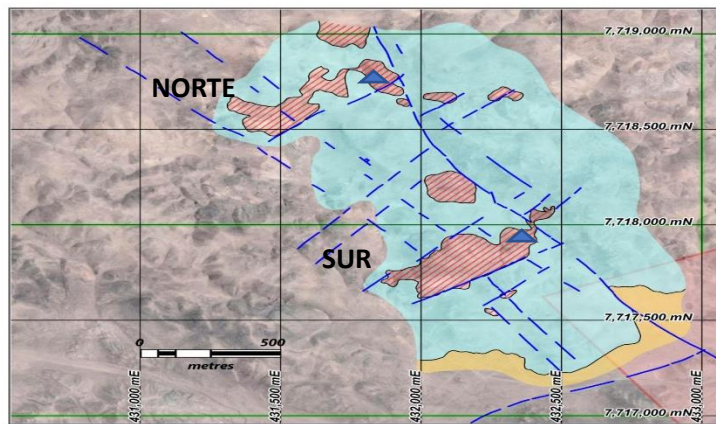


## Victoria Oeste

N Muestra	Ag ppm	Cu ppm	Mo ppm	Au g/TA
117318	<2	1783	<11	0,012
117325	4	823	<11	0,45
117326	<2	866	<11	1,12
117327	<2	305	<11	0,312
117329	<2	1153	<11	0,497
117341	<2	694	<11	0,189
143303	3,3	24197	<11	
143304	<2	9344	<11	
143328	<2	1520	<11	
162805	<2	2412	<11	0,01
162817	<2	6286	<11	3,15
219416	<2	8696	<11	2,68
219417	<2	943	<11	0,273
219418	<2	2100	11,4	0,139
219421	<2	2987	<11	0,601
219422	<2	1563	<11	0,231
219423	3,5	13499	83	0,455
219424	<2	20305	19	1,805
219425	<2	7589	15,4	3,48
219426	<2	452	<11	0,218
219427	<2	13904	11,3	2,88
219428	<2	476	<11	0,068
219429	<2	2920	12,2	5,08
219430	<2	6911	<11	1,045



## Loma Roja



## Evita-Babilonia

N° MUESTRA	Cu Tot (%)	Cu Sol (%)	Au (gr/t)
2305	3.69	3.64	2.93
2306	1.33	1.29	1.77
2307	0.05	0.05	3.44
2308	0.74	0.67	11.10
2309	3.91	3.81	33.90
2310	0.70	0.61	1.05

